

**SERPINA7 Antibody (C-term)**  
**Purified Rabbit Polyclonal Antibody (Pab)**  
**Catalog # AP6714b****Specification**

---

**SERPINA7 Antibody (C-term) - Product Information**

Application	FC, IHC-P, WB,E
Primary Accession	<a href="#">P05543</a>
Reactivity	Human
Host	Rabbit
Clonality	Polyclonal
Isotype	Rabbit IgG
Calculated MW	46325
Antigen Region	354-383

**SERPINA7 Antibody (C-term) - Additional Information****Gene ID** 6906**Other Names**

Thyroxine-binding globulin, Serpin A7, T4-binding globulin, SERPINA7, TBG

**Target/Specificity**

This SERPINA7 antibody is generated from rabbits immunized with a KLH conjugated synthetic peptide between 354-383 amino acids from the C-terminal region of human SERPINA7.

**Dilution**

FC~~1:10~50

IHC-P~~1:10~50

WB~~1:1000

E~~Use at an assay dependent concentration.

**Format**

Purified polyclonal antibody supplied in PBS with 0.09% (W/V) sodium azide. This antibody is prepared by Saturated Ammonium Sulfate (SAS) precipitation followed by dialysis against PBS.

**Storage**

Maintain refrigerated at 2-8°C for up to 2 weeks. For long term storage store at -20°C in small aliquots to prevent freeze-thaw cycles.

**Precautions**

SERPINA7 Antibody (C-term) is for research use only and not for use in diagnostic or therapeutic procedures.

**SERPINA7 Antibody (C-term) - Protein Information****Name** SERPINA7

**Synonyms** TBG

**Function** Major thyroid hormone transport protein in serum.

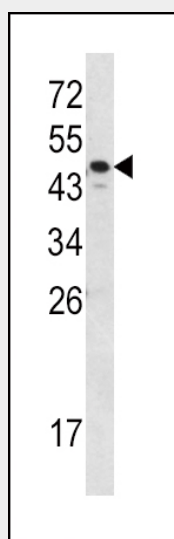
**Cellular Location**  
Secreted.

**Tissue Location**  
Expressed by the liver and secreted in plasma.

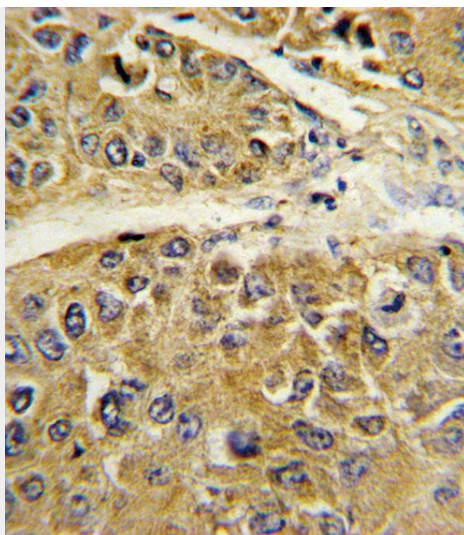
**SERPINA7 Antibody (C-term) - Protocols**

Provided below are standard protocols that you may find useful for product applications.

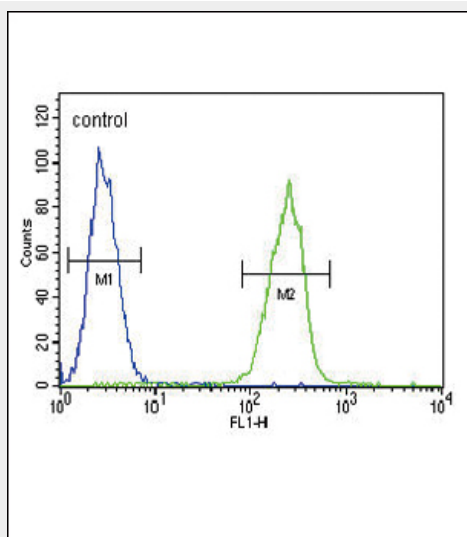
- [Western Blot](#)
- [Blocking Peptides](#)
- [Dot Blot](#)
- [Immunohistochemistry](#)
- [Immunofluorescence](#)
- [Immunoprecipitation](#)
- [Flow Cytometry](#)
- [Cell Culture](#)

**SERPINA7 Antibody (C-term) - Images**

Western blot analysis of SERPINA7 Antibody (C-term) (Cat. #AP6714b) in MDA-MB231 cell line lysates (35ug/lane). SERPINA7 (arrow) was detected using the purified Pab.



Formalin-fixed and paraffin-embedded human hepatocarcinoma reacted with SERPINA7 Antibody (C-term), which was peroxidase-conjugated to the secondary antibody, followed by DAB staining. This data demonstrates the use of this antibody for immunohistochemistry; clinical relevance has not been evaluated.



SERPINA7 Antibody (C-term) (Cat. #AP6714b) flow cytometric analysis of MDA-MB231 cells (right histogram) compared to a negative control cell (left histogram). FITC-conjugated goat-anti-rabbit secondary antibodies were used for the analysis.

### **SERPINA7 Antibody (C-term) - Background**

SERPINA7 is a major thyroid hormone transport protein in serum.

### **SERPINA7 Antibody (C-term) - References**

Domingues, R., Endocrine 36 (1), 83-86 (2009)